

**Profec Hose tail 2/3 union  
adaptor brass 3/4" x 13 mm  
female threaded nut x hose tail  
type flat seal (0423341)**

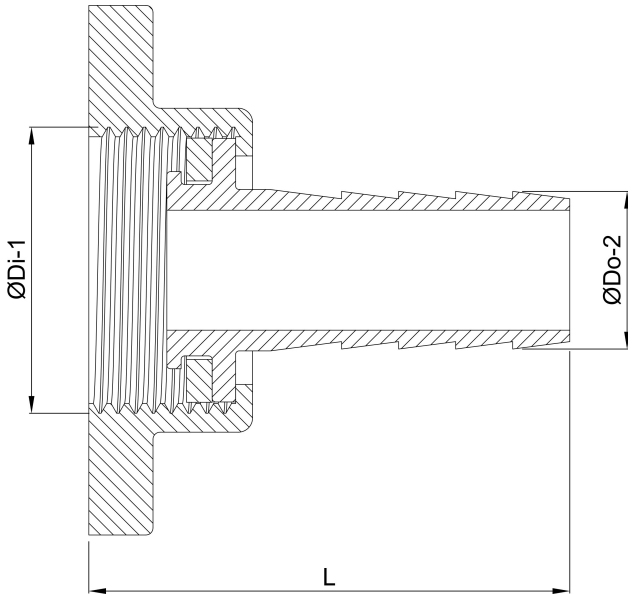


# TECHNICAL SPECIFICATIONS

Type	flat seal
Material	brass
Connection	female threaded nut x hose tail
Max. temp.	120 °C
Size	3/4" x 13 mm
Max. temperature	120 °C

## DIMENSIONS

Dq-2	11.6 mm
F-1	13 mm
L	30.5 mm
Lb	36 mm
Lq-2	18 mm
Nq-2	4
P-1	19.5 mm
ØDi-1	3/4 "
ØDo-2	10 mm



**Last modified date: 23/05/2026**

Bosta UK Ltd.  
Reflection House  
Olding Road  
Bury St. Edmunds  
Suffolk  
IP33 3TA  
T +44 (0) 1284 716580  
E [enquiries@bosta.co.uk](mailto:enquiries@bosta.co.uk)  
<http://www.bosta.com>