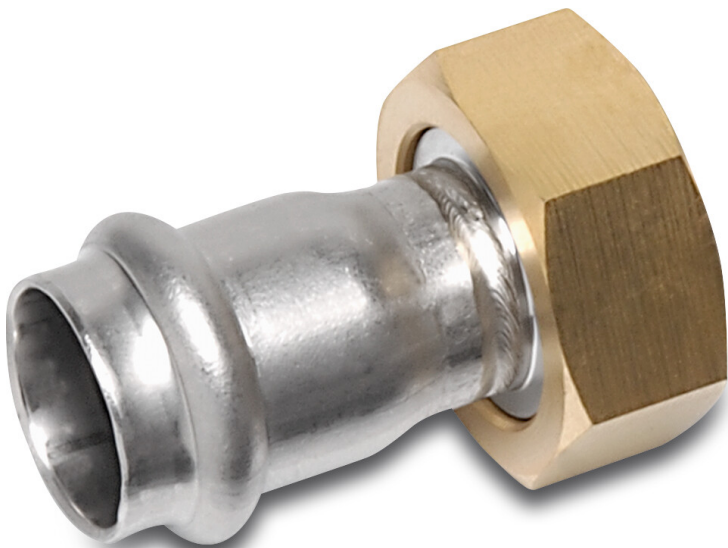


**Bonfix 2/3 union coupler  
stainless steel 316L 1 1/4" x 28  
mm female thread x press  
16bar DVGW/KIWA (0085069)**



**bonfix®**  
the fitting factory

# TECHNICAL SPECIFICATIONS

Material stainless steel 316L

Approval DVGW/KIWA

Material seal EPDM

Connection female thread x press

Temperature range -20°C - 85°C

Pressure 16 bar

Wall thickness 1,5 mm

Size 1 1/4" x 28 mm

**Last modified date: 22/05/2026**

Bosta UK Ltd.  
Reflection House  
Olding Road  
Bury St. Edmunds  
Suffolk  
IP33 3TA  
T +44 (0) 1284 716580  
E [enquiries@bosta.co.uk](mailto:enquiries@bosta.co.uk)  
<http://www.bosta.com>