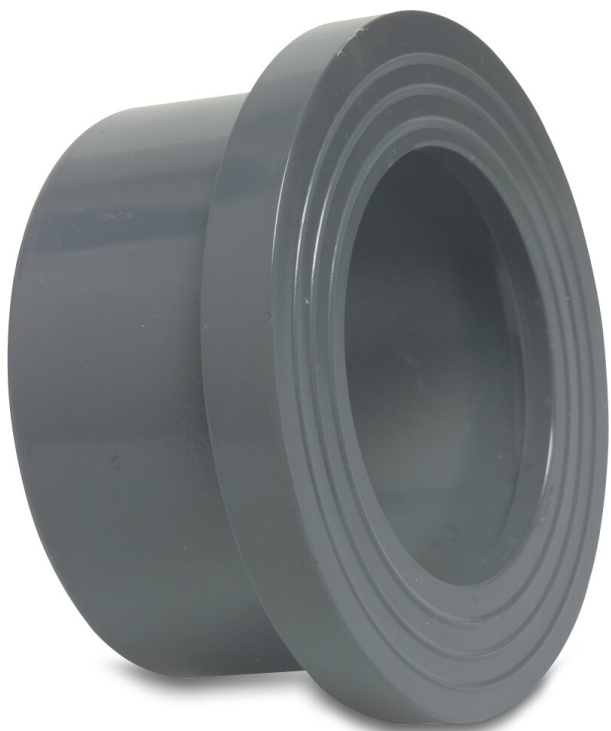


**Profec Stub flange PVC-U 50
mm glue socket 16bar DN40
grey PN16 WRAS (0110902)**



TECHNICAL SPECIFICATIONS

Colour	grey
Material	PVC-U
Approval	WRAS
Material housing	PVC-U
Material seal	EPDM
Connection	glue socket
Size	50 mm
Packaging	150 pcs
DN	40
Flange	PN16
Outer ø	61 mm
Weight	0.059 kg
Thickness	8 mm
Pressure	16 bar
PCD	61 mm

DIMENSIONS

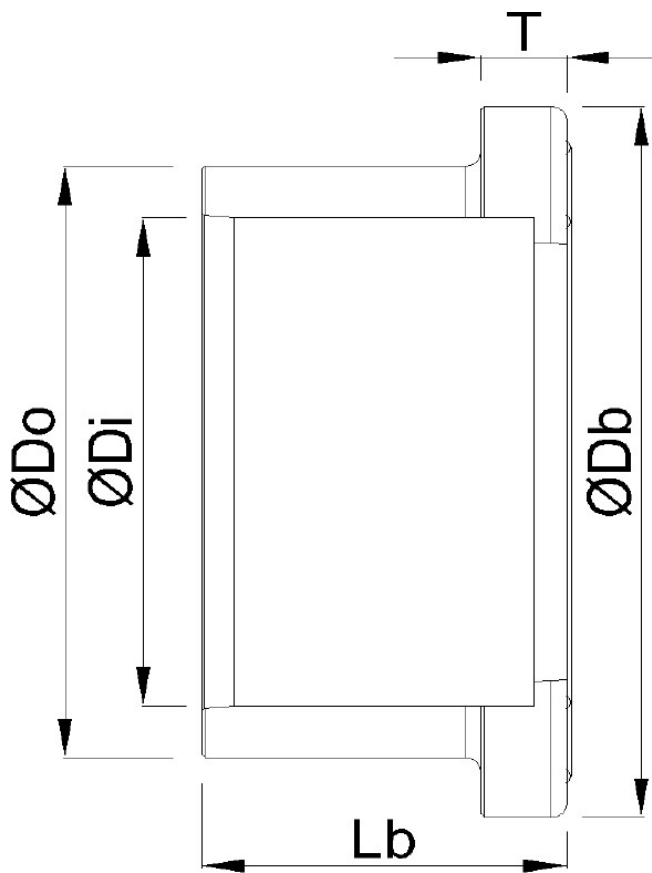
Db 73 mm

Lb 34 mm

T 8 mm

ØDi-1 50 mm

ØDo-1 61 mm



PRODUCT INFORMATION

Next to the connection dimensions (Size and PCD) for the backing rings and stub flanges we show the inner-hole size of the backing flange and the pipe size from the stub flange. For backing rings, the inner hole size is given in column Inner Ø

For stub flanges, the pipe size is given in column Outer Ø

Last modified date: 13/03/2026

Bosta UK Ltd.
Reflection House
Olding Road
Bury St. Edmunds
Suffolk
IP33 3TA
T +44 (0) 1284 716580
E enquiries@bosta.co.uk
<http://www.bosta.com>