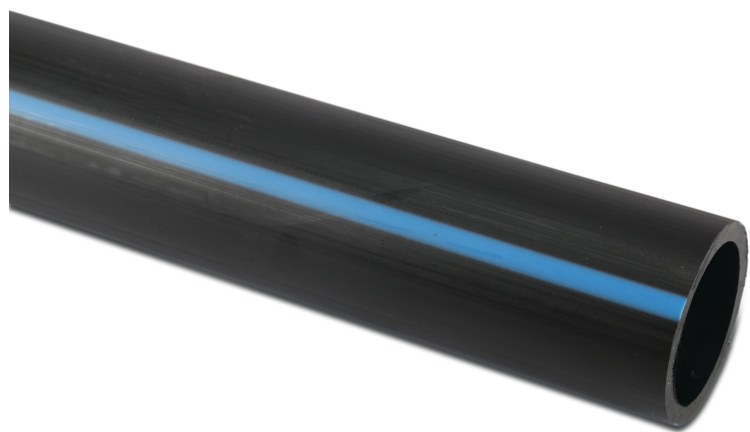


**Pressure pipe PE100 160 mm x
9,5 mm plain SDR17 10bar
black/blue 6m DVGW (0390609)**



TECHNICAL SPECIFICATIONS

Colour black/blue

Material PE100

Approval DVGW

Connection plain

Length 6 m

Class SDR17

Expansion coefficient 0.2

Pressure 10 bar

Size 160 mm

Wall thickness 9,5 mm

Last modified date: 07/03/2026

Bosta UK Ltd.
Reflection House
Olding Road
Bury St. Edmunds
Suffolk
IP33 3TA
T +44 (0) 1284 716580
E enquiries@bosta.co.uk
<http://www.bosta.com>