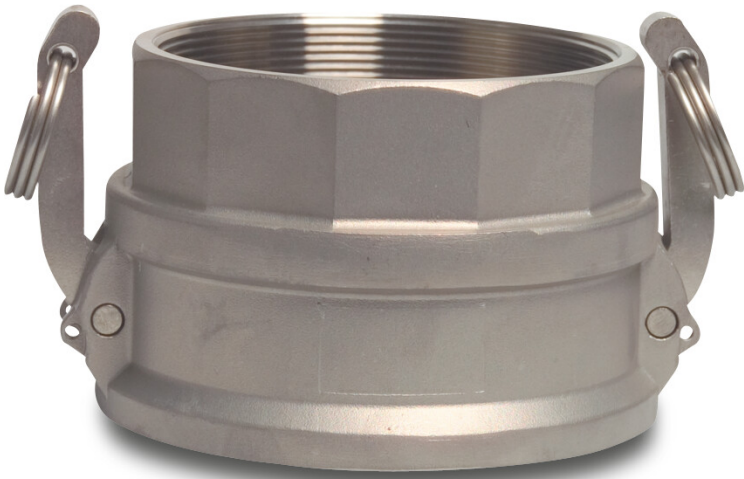


**Quick coupler stainless steel
316 3/4" female part Camlock x
female thread 16bar type
Camlock D (0075071)**



TECHNICAL SPECIFICATIONS

Type	Camlock D
Material	stainless steel 316
Material seal	NBR
Connection	female part Camlock x female thread
Temperature range	-30°C - 100°C
Size	3/4"
Length	45,5 mm
Pressure	16 bar

Last modified date: 22/05/2026

Bosta UK Ltd.
Reflection House
Olding Road
Bury St. Edmunds
Suffolk
IP33 3TA
T +44 (0) 1284 716580
E enquiries@bosta.co.uk
<http://www.bosta.com>