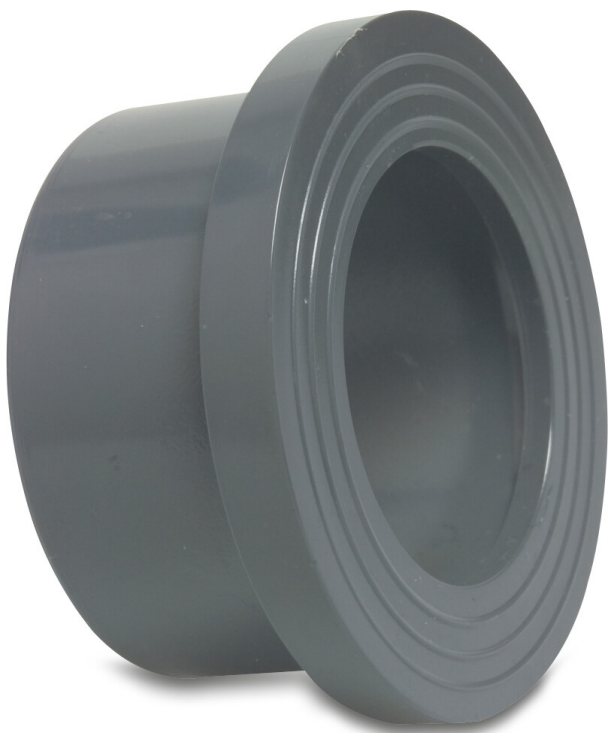


**Profec Stub flange PVC-U 40
mm glue socket 16bar DN32
grey PN16 WRAS (0110901)**



TECHNICAL SPECIFICATIONS

Colour	grey
Material	PVC-U
Approval	WRAS
Material housing	PVC-U
Material seal	EPDM
Connection	glue socket
Size	40 mm
Packaging	250 pcs
DN	32
Flange	PN16
Outer ø	50 mm
Weight	0.042 kg
Thickness	8 mm
Pressure	16 bar
PCD	50 mm

DIMENSIONS

Db	61 mm
----	-------

Lb	29 mm
----	-------

T	8 mm
---	------

ØDi-1	40 mm
----------------	-------

ØDo-1	50 mm
----------------	-------



PRODUCT INFORMATION

Next to the connection dimensions (Size and PCD) for the backing rings and stub flanges we show the inner-hole size of the backing flange and the pipe size from the stub flange.

For backing rings, the inner hole size is given in column Inner Ø

For stub flanges, the pipe size is given in column Outer Ø

Last modified date: 23/05/2026

Bosta UK Ltd.
Reflection House
Olding Road
Bury St. Edmunds
Suffolk
IP33 3TA
T +44 (0) 1284 716580
E enquiries@bosta.co.uk
<http://www.bosta.com>