

**Profec Nr. 246 Reducer socket
cast iron galvanised 1 1/2" x
3/4" female thread x male
thread 25bar DVGW (1024614)**

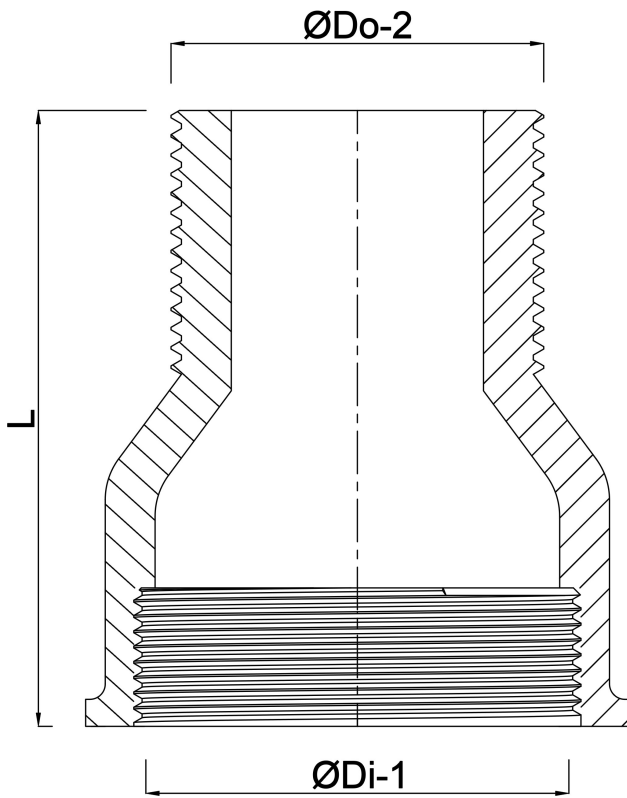


TECHNICAL SPECIFICATIONS

Material	cast iron
Surface treatment	galvanised
Approval	DVGW
Connection	female thread x male thread
Fitting nr.	Nr. 246
Temperature range	-20°C - 120°C
Pressure	25 bar
Size	1 1/2" x 3/4"

DIMENSIONS

F-1	21 mm
F-2	18 mm
L	62 mm
ØDi-1	1/2 "
ØDo-2	3/4 "



Last modified date: 24/05/2026

Bosta UK Ltd.
Reflection House
Olding Road
Bury St. Edmunds
Suffolk
IP33 3TA
T +44 (0) 1284 716580
E enquiries@bosta.co.uk
<http://www.bosta.com>