

**Profec Flange welding neck
steel DN40 x 48,3 mm DIN
flange x butt welding black
PN16 (1180478)**



TECHNICAL SPECIFICATIONS

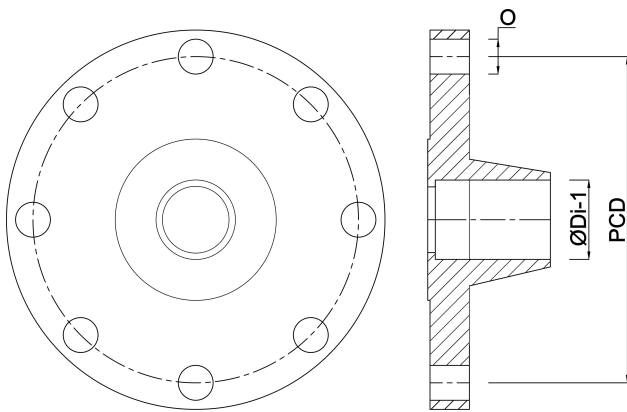
Colour	black
Material	steel
Connection	DIN flange x butt welding
DIN Standard	DIN 2633
Flange	PN16
Size	DN40 x 48,3 mm
Outer ø	150 mm
Weight	1.83 kg
Height	42 mm
Thickness	16 mm
PCD	110 mm
Bolt hole	18 mm
Holes	4

DIMENSIONS

O	18 mm
PCD	110 mm

ØDi-1

43.1 mm



Last modified date: 24/05/2026

Bosta UK Ltd.
Reflection House
Olding Road
Bury St. Edmunds
Suffolk
IP33 3TA
T +44 (0) 1284 716580
E enquiries@bosta.co.uk
<http://www.bosta.com>