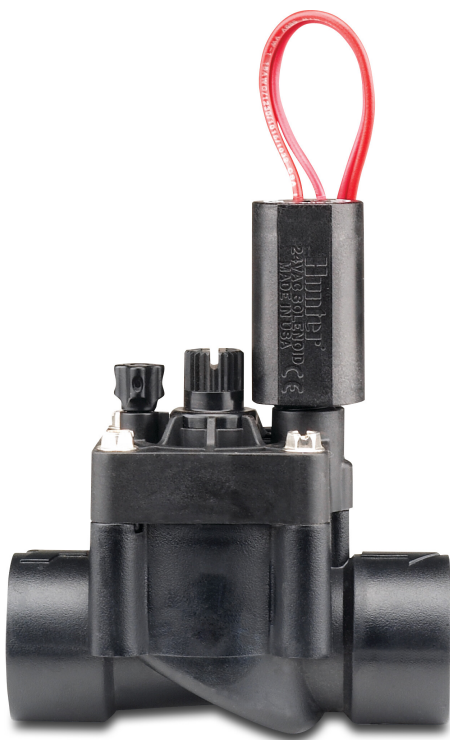


**Hunter Solenoid valve  
fibreglass reinforced nylon 1  
1/2" female thread 10bar  
24VAC black type PGV-151-B  
with flow control (7026330)**



**Hunter®**

# TECHNICAL SPECIFICATIONS

Colour	black
Material	fibreglass reinforced nylon
Operation	indirect solenoid-operated with flow control handle
Material housing	fibreglass reinforced nylon
Voltage	24VAC
Minimum inlet pressure	1.5 bar
Pressure	10 bar
Max. temp.	66 °C
Type	PGV-151-B
Capacity	75 - 570 l/min
Size	1 1/2"
Connection	female thread
Type	with flow control

## PRODUCT INFORMATION

Recommended for residential and light commercial sites.  
External/internal manual bleed allows for quick and easy activation at the valve.  
Flow control maximises efficiency and prolongs the life of the system.

**Last modified date: 26/05/2026**

Bosta UK Ltd.  
Reflection House  
Olding Road  
Bury St. Edmunds  
Suffolk  
IP33 3TA  
T +44 (0) 1284 716580  
E [enquiries@bosta.co.uk](mailto:enquiries@bosta.co.uk)  
<http://www.bosta.com>