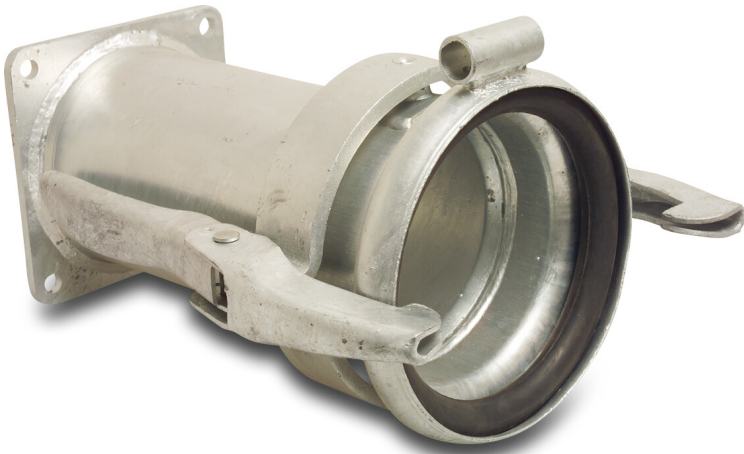


**Quick coupler adaptor steel  
galvanised 159 mm x DN150  
female part Perrot x DIN flange  
PN10/16 type Perrot (0218397)**



# TECHNICAL SPECIFICATIONS

Type	Perrot
Material	steel
Surface treatment	galvanised
Size	159 mm x DN150
Connection	female part Perrot x DIN flange
Flange	PN10/16
PCD	240 mm
Holes	8

## DIMENSIONS

PCD	240 mm
-----	--------

**Last modified date: 23/05/2026**

Bosta UK Ltd.  
Reflection House  
Olding Road  
Bury St. Edmunds  
Suffolk  
IP33 3TA  
T +44 (0) 1284 716580  
E [enquiries@bosta.co.uk](mailto:enquiries@bosta.co.uk)  
<http://www.bosta.com>