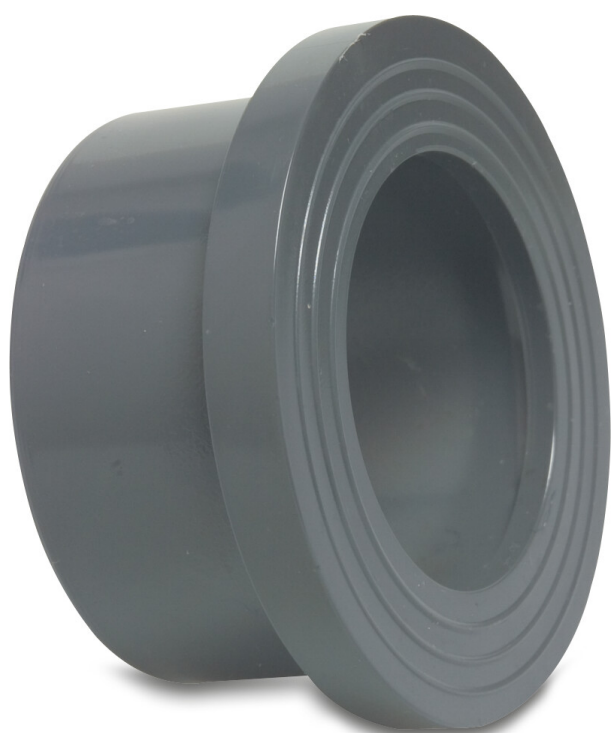


**Profec Stub flange PVC-U 280
mm glue socket 10bar DN250
grey PN10 WRAS (0110914)**



TECHNICAL SPECIFICATIONS

Colour grey

Material PVC-U

Approval WRAS

Material housing PVC-U

Material seal EPDM

Connection glue socket

Size 280 mm

DN 250

Flange PN10

Outer ø 307 mm

Weight 3.65 kg

Thickness 32 mm

Pressure 10 bar

PCD 326 mm

DIMENSIONS

L 161.5 mm

L 161.5 mm

T 32 mm

Lb 161,5 mm

ØDi-1 280 mm

ØDi-2 280 mm

ØDo-1 307 mm

ØDo-2 307 mm

Db 327 mm

PRODUCT INFORMATION

Next to the connection dimensions (Size and PCD) for the backing rings and stub flanges we show the inner-hole size of the backing flange and the pipe size from the stub flange.

For backing rings, the inner hole size is given in column Inner Ø

For stub flanges, the pipe size is given in column Outer Ø

Last modified date: 01/10/2025

Bosta UK Ltd.
Reflection House
Olding Road
Bury St. Edmunds
Suffolk
IP33 3TA
T +44 (0) 1284 716580

[E enquiries@bosta.co.uk](mailto:enquiries@bosta.co.uk)

<http://www.bosta.com>