

**Profec Stub flange PVC-U 32
mm glue socket 16bar DN25
grey PN16 WRAS (0110900)**



TECHNICAL SPECIFICATIONS

Colour	grey
Material	PVC-U
Approval	WRAS
Material housing	PVC-U
Material seal	EPDM
Connection	glue socket
Size	32 mm
Packaging	400 pcs
DN	25
Flange	PN16
Outer ø	41 mm
Weight	0.026 kg
Thickness	7 mm
Pressure	16 bar
PCD	41 mm

DIMENSIONS

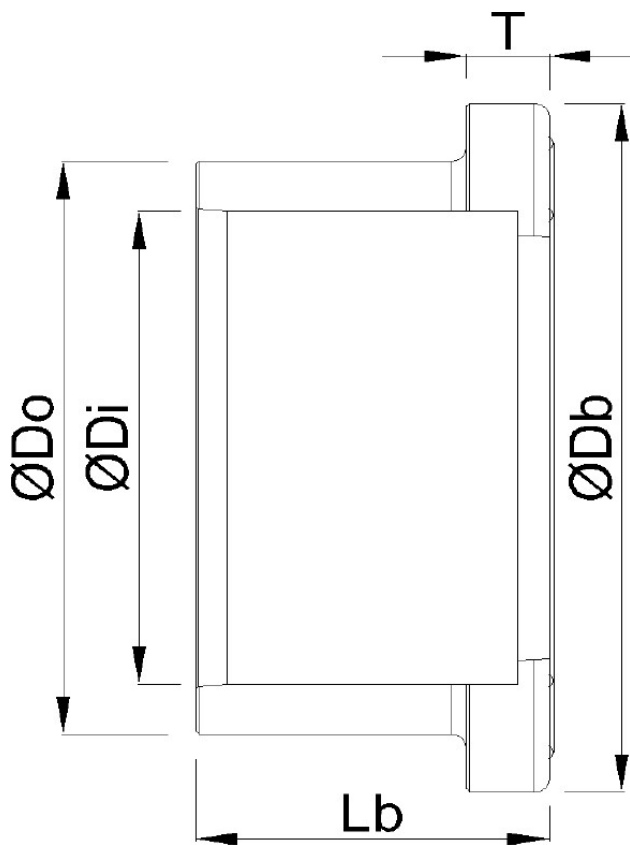
Db 50 mm

Lb 25 mm

T 7 mm

ØDi-1 32 mm

ØDo-1 41 mm



PRODUCT INFORMATION

Next to the connection dimensions (Size and PCD) for the backing rings and stub flanges we show the inner-hole size of the backing flange and the pipe size from the stub flange.

For backing rings, the inner hole size is given in column Inner Ø

For stub flanges, the pipe size is given in column Outer Ø

Last modified date: 23/05/2026

Bosta UK Ltd.
Reflection House
Olding Road
Bury St. Edmunds
Suffolk
IP33 3TA
T +44 (0) 1284 716580
E enquiries@bosta.co.uk
<http://www.bosta.com>