

Flange adaptor steel 6" x 150 mm square flange x butt welding black (0200592)

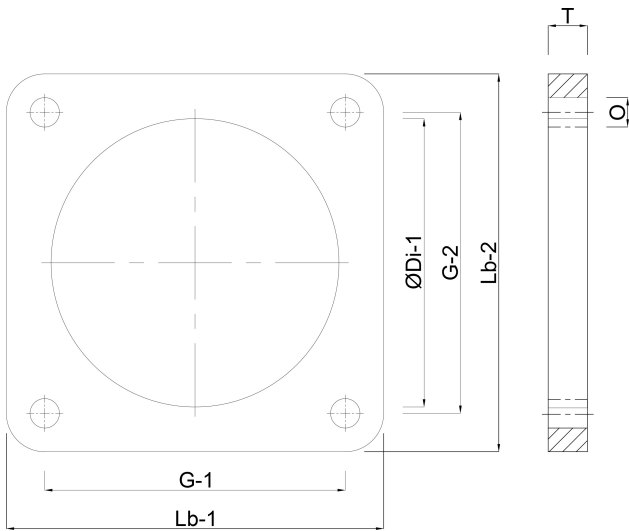


TECHNICAL SPECIFICATIONS

Colour	black
Material	steel
Connection	square flange x butt welding
Thickness	8 mm
Holes	4
Size	6" x 150 mm
Outer dimension flange	180x180

DIMENSIONS

G-1	150 mm
G-2	150 mm
Hole spacing	150 x 150 mm
Lb	180 mm
Lb-2	180 mm
O	13 mm
T	8 mm
ØDi-1	150 mm



Last modified date: 23/05/2026

Bosta UK Ltd.
Reflection House
Olding Road
Bury St. Edmunds
Suffolk
IP33 3TA
T +44 (0) 1284 716580
E enquiries@bosta.co.uk
<http://www.bosta.com>