

**Profec Hose tail 2/3 union
adaptor brass 1 1/2" x 38 mm
female threaded nut x hose tail
type flat seal (0423315)**

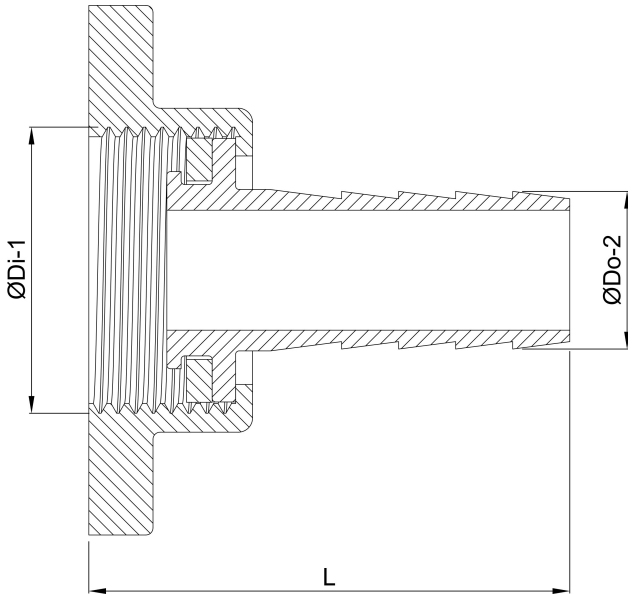


TECHNICAL SPECIFICATIONS

Type	flat seal
Material	brass
Connection	female threaded nut x hose tail
Max. temp.	120 °C
Size	1 1/2" x 38 mm
Max. temperature	120 °C

DIMENSIONS

Dq-2	35.5 mm
F-1	17 mm
L	55 mm
Lb	65 mm
Lq-2	40 mm
Nq-2	4
P-1	40 mm
ØDi-1	1 1/2 "
ØDo-2	38 mm



Last modified date: 23/05/2026

Bosta UK Ltd.
Reflection House
Olding Road
Bury St. Edmunds
Suffolk
IP33 3TA
T +44 (0) 1284 716580
E enquiries@bosta.co.uk
<http://www.bosta.com>