

**Profec Nr. 246 Reducer socket
cast iron galvanised 3/4" x 1/2"
female thread x male thread
25bar DVGW (1024606)**

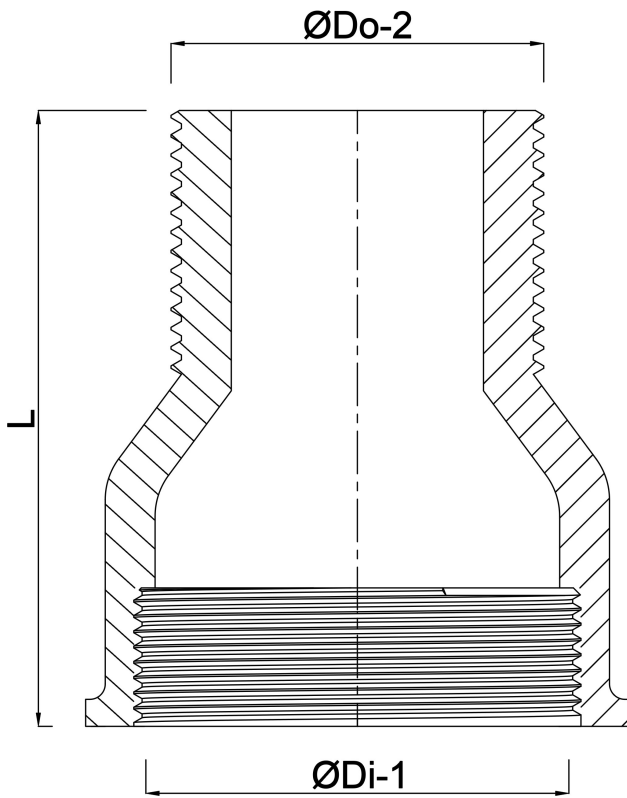


TECHNICAL SPECIFICATIONS

Material	cast iron
Surface treatment	galvanised
Approval	DVGW
Connection	female thread x male thread
Fitting nr.	Nr. 246
Temperature range	-20°C - 120°C
Pressure	25 bar
Size	3/4" x 1/2"

DIMENSIONS

F-1	16 mm
F-2	14 mm
L	47 mm
ØDi-1	3/4 "
ØDo-2	1/2 "



Last modified date: 24/05/2026

Bosta UK Ltd.
Reflection House
Olding Road
Bury St. Edmunds
Suffolk
IP33 3TA
T +44 (0) 1284 716580
E enquiries@bosta.co.uk
<http://www.bosta.com>