

**Profec Flange welding neck
steel DN100 x 114,3 mm DIN
flange x butt welding black
PN16 (1180485)**



TECHNICAL SPECIFICATIONS

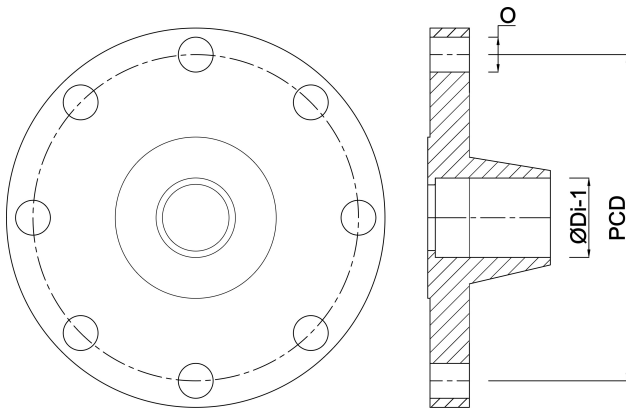
Colour	black
Material	steel
Connection	DIN flange x butt welding
DIN Standard	DIN 2633
Flange	PN16
Size	DN100 x 114,3 mm
Outer ø	220 mm
Weight	4.41 kg
Height	52 mm
Thickness	20 mm
PCD	180 mm
Bolt hole	18 mm
Holes	8

DIMENSIONS

O	18 mm
PCD	180 mm

ØDi-1

107.1 mm



Last modified date: 24/05/2026

Bosta UK Ltd.
Reflection House
Olding Road
Bury St. Edmunds
Suffolk
IP33 3TA
T +44 (0) 1284 716580
E enquiries@bosta.co.uk
<http://www.bosta.com>