

Hayward Pool pump 63 mm glue socket 5,9A 230VAC black type RS II VSTD 1.5HP (7016710)



 **HAYWARD®**

TECHNICAL SPECIFICATIONS

Colour	black
Type	RS II VSTD
Pump body	PP GF
Material impeller 1	noryl
Material cover	polycarbonate
Material seal	stainless steel 304
Connection	glue socket
Voltage	230VAC
Max. temperature	35 °C
Width	234 mm
Weight	14.5 kg
Height	305 mm
Frequency	50 Hz
Max. pool vol.	100 m ³
IP value	IP55
Motor RPM	600-3000
Output Power	1,5 HP

Size 63 mm

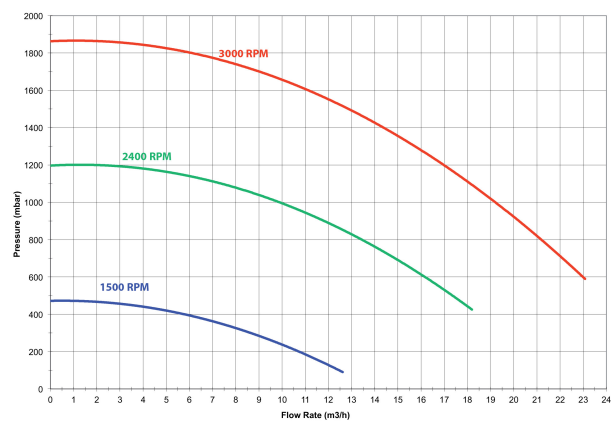
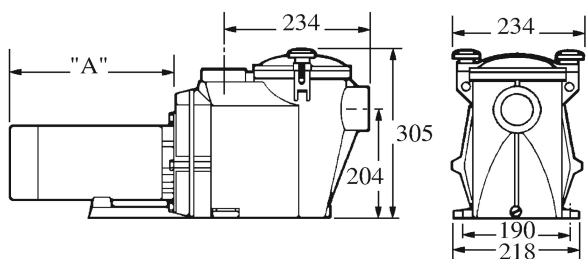
Power 1.1 kW

Ampere 5,9 A

Max flow rate 19.7 m³/h

DIMENSIONS

A 230 mm



PRODUCT INFORMATION

The RS II VSTD pump provides optimum filtration control and significant energy savings for pools of all types and sizes. Running your filtration 24 hours a day makes it possible to save up to 75% on electrical consumption. The Heavy-Duty, highly efficient, German motor offers quiet running and will give a reliable lifetime.

Features:

- Exclusive for Bevo/Bosta

- Union connection: Glue socket 63 mm
- Salt water resistant to 0.4% (4gr/ltr)
- Integrated, easy access controller with strong buttons
- 5 possible daily speed changes
- Programmable skimming function
- 4 digital inputs (dry contact) for connecting external devices
- Control box with timer function

Last modified date: 25/05/2026

Bosta UK Ltd.
Reflection House
Olding Road
Bury St. Edmunds
Suffolk
IP33 3TA
T +44 (0) 1284 716580
E enquiries@bosta.co.uk
<http://www.bosta.com>