

**Profec Stub flange PVC-U 125  
mm glue socket 16bar DN110  
grey PN16 WRAS (0110907)**



# TECHNICAL SPECIFICATIONS

Colour	grey
Material	PVC-U
Approval	WRAS
Material housing	PVC-U
Material seal	EPDM
Connection	glue socket
Size	125 mm
Packaging	14 pcs
DN	110
Flange	PN16
Outer ø	145 mm
Weight	0.53 kg
Thickness	13 mm
Pressure	16 bar
PCD	148 mm

## DIMENSIONS

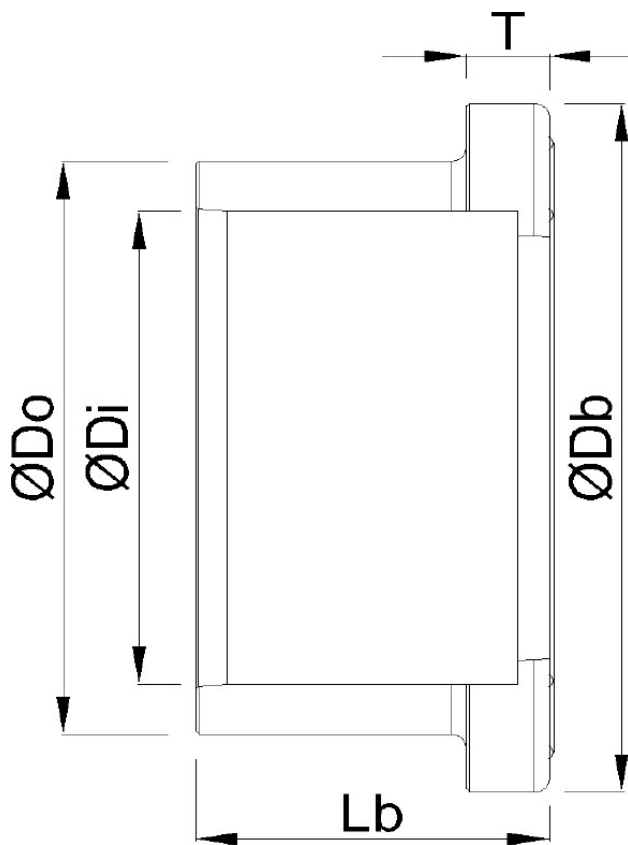
Db	167 mm
----	--------

Lb	74 mm
----	-------

T	13 mm
---	-------

$\text{ØDi-1}$	125 mm
----------------	--------

$\text{ØDo-1}$	145 mm
----------------	--------



## PRODUCT INFORMATION

Next to the connection dimensions (Size and PCD) for the backing rings and stub flanges we show the inner-hole size of the backing flange and the pipe size from the stub flange.

For backing rings, the inner hole size is given in column Inner  $\text{Ø}$

For stub flanges, the pipe size is given in column Outer  $\text{Ø}$

**Last modified date: 23/05/2026**

Bosta UK Ltd.  
Reflection House  
Olding Road  
Bury St. Edmunds  
Suffolk  
IP33 3TA  
T +44 (0) 1284 716580  
E [enquiries@bosta.co.uk](mailto:enquiries@bosta.co.uk)  
<http://www.bosta.com>