

**Backing ring PP/steel PP 200
mm SDR11 16bar DN200 black
PN10 (0101941)**



TECHNICAL SPECIFICATIONS

Colour black

Material PP/steel

Surface treatment PP

Class SDR11

Pressure 16 bar

Size 200 mm

DN 200

Flange PN10

Outer ø 340 mm

Weight 2.64 kg

Thickness 25 mm

Bolt hole 22 mm

Holes 8

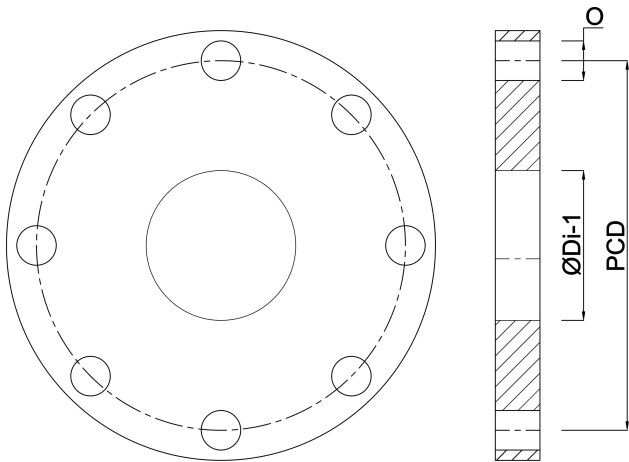
DIMENSIONS

O 22 mm

PCD 295 mm

ØDi-1

235 mm



Last modified date: 22/05/2026

Bosta UK Ltd.
Reflection House
Olding Road
Bury St. Edmunds
Suffolk
IP33 3TA
T +44 (0) 1284 716580
E enquiries@bosta.co.uk
<http://www.bosta.com>