

**Profec Flange welding neck
steel DN25 x 33,7 mm DIN
flange x butt welding black
PN16 (1180474)**



TECHNICAL SPECIFICATIONS

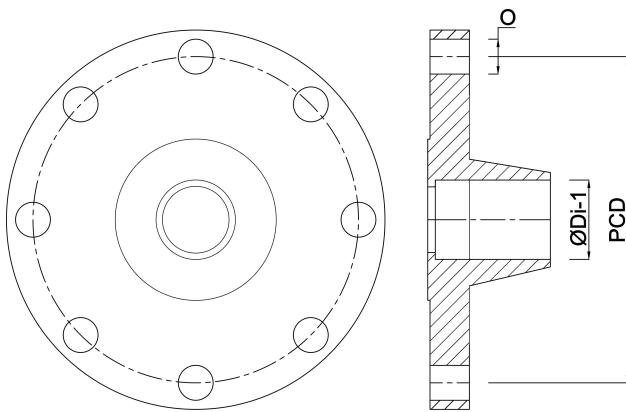
Colour	black
Material	steel
Connection	DIN flange x butt welding
DIN Standard	DIN 2633
Flange	PN16
Size	DN25 x 33,7 mm
Outer ø	115 mm
Weight	1.14 kg
Height	38 mm
Thickness	16 mm
PCD	85 mm
Bolt hole	14 mm
Holes	4

DIMENSIONS

O	14 mm
PCD	85 mm

ØDi-1

28.5 mm



Last modified date: 24/05/2026

Bosta UK Ltd.
Reflection House
Olding Road
Bury St. Edmunds
Suffolk
IP33 3TA
T +44 (0) 1284 716580
E enquiries@bosta.co.uk
<http://www.bosta.com>