

**Backing ring PP/steel PP 32
mm SDR11 16bar DN25 black
PN10/16 (7031729)**



TECHNICAL SPECIFICATIONS

Colour black

Material PP/steel

Surface treatment PP

Class SDR11

Pressure 16 bar

Size 32 mm

DN 25

Flange PN10/16

Outer ø 115 mm

Weight 0.4 kg

Thickness 16 mm

Bolt hole 14 mm

Holes 4

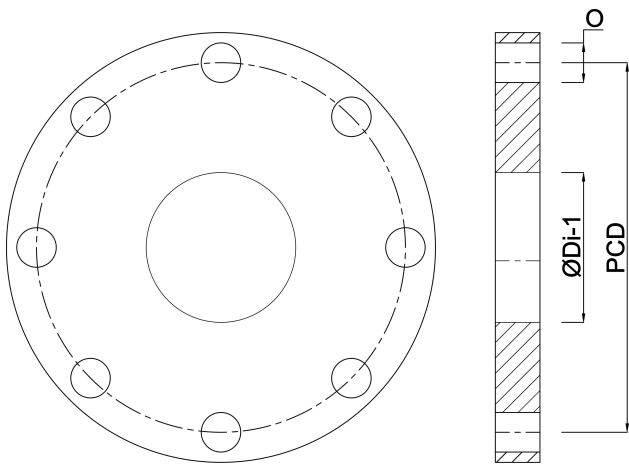
DIMENSIONS

O 14 mm

PCD 85 mm

ØDi-1

42 mm



Last modified date: 22/05/2026

Bosta UK Ltd.
Reflection House
Olding Road
Bury St. Edmunds
Suffolk
IP33 3TA
T +44 (0) 1284 716580
E enquiries@bosta.co.uk
<http://www.bosta.com>