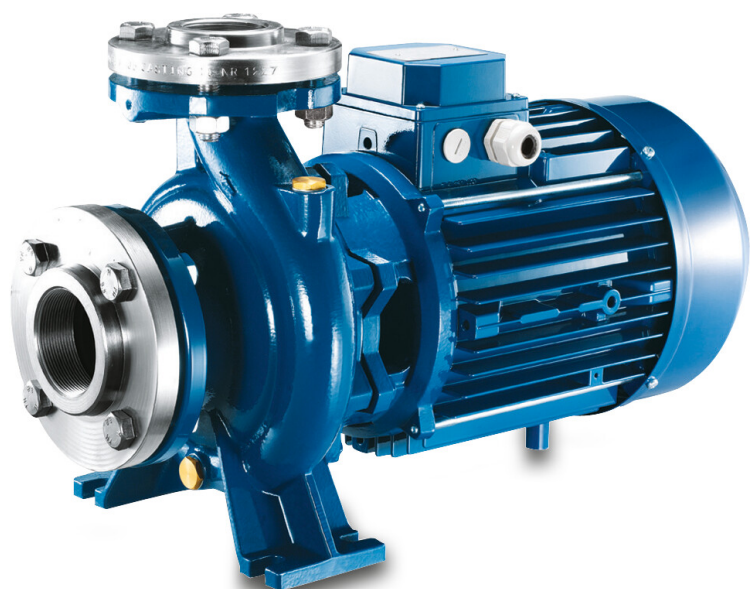


**Foras Centrifugal pump cast
iron DN65 x 65 mm x DN50 x 50
mm DIN flange 10bar 27A
400/690VAC blue type MN50
200 A (0920311)**



TECHNICAL SPECIFICATIONS

Colour blue

Material cast iron

Material impeller 1 cast iron

Connection DIN flange

Max. temperature 90 °C

Minimum medium temperature -10 °C
(continuous)

Maximum ambient temperature 40 °C

Minimum ambient temperature 0 °C

Type MN50 200 A

Output Power 20 HP

Max. head 59.9 m

Size DN65 x 65 mm x DN50 x 50 mm

Seal type H

Length 705 mm

Voltage 400/690VAC

Width 290 mm

Weight 132.5 kg

Power 15 kW

Height 360 mm

Max flow rate 78 m³/h

BEP Capacity 54

BEP Head 51

Efficiency 56 %

Press 50

Suction 65

Packaging dimensions L/W/H 810 x 354 x 480 mm

DIMENSIONS

Cb-1 160 mm

Cl-1 100 mm

Ct-1 200 mm

G-1 212 mm

H 360 mm

H 360 mm

L 705 mm

Mc 70 mm

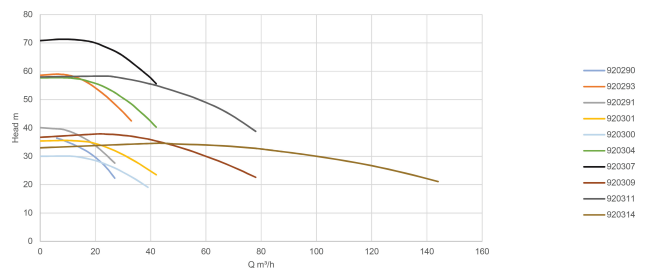
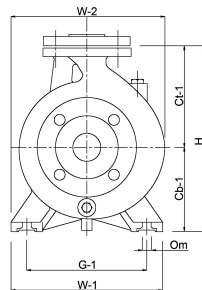
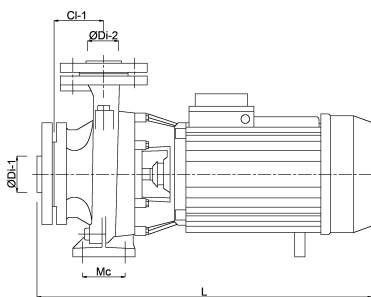
O 14 mm

W-1 265 mm

W-2 290 mm

ØDi-1 65 mm

ØDi-2 50 mm



PRODUCT INFORMATION

The pumps are supplied complete with counter flanges with female thread.

Mechanical seal.

Maximum water temperature 90°C.

Last modified date: 10/07/2026

Bosta UK Ltd.
Reflection House
Olding Road
Bury St. Edmunds

Suffolk
IP33 3TA
T +44 (0) 1284 716580
E enquiries@bosta.co.uk
<http://www.bosta.com>