

**Backing ring PP/steel PP 315
mm SDR11 16bar DN300 black
PN10 (7031733)**



TECHNICAL SPECIFICATIONS

Colour black

Material PP/steel

Surface treatment PP

Class SDR11

Pressure 16 bar

Size 315 mm

DN 300

Flange PN10

Outer ø 463 mm

Weight 9.76 kg

Thickness 34 mm

Bolt hole 23 mm

Holes 12

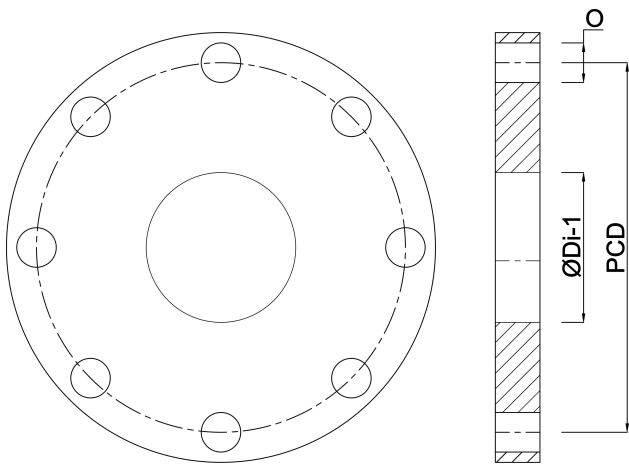
DIMENSIONS

O 23 mm

PCD 400 mm

ØDi-1

338 mm



Last modified date: 22/05/2026

Bosta UK Ltd.
Reflection House
Olding Road
Bury St. Edmunds
Suffolk
IP33 3TA
T +44 (0) 1284 716580
E enquiries@bosta.co.uk
<http://www.bosta.com>