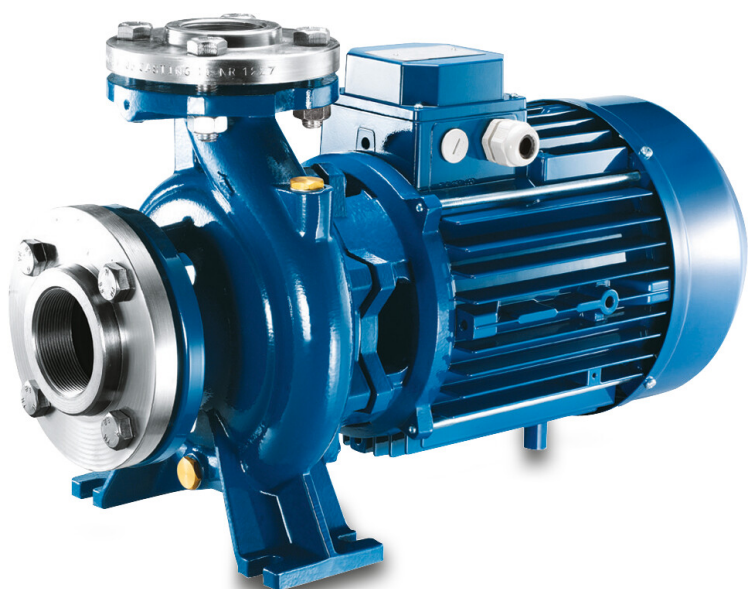


**Foras Centrifugal pump cast  
iron DN65 x 65 mm x DN40 x 40  
mm DIN flange 10bar 16,8A  
400/690VAC blue type MN40  
200 A (0920304)**



# TECHNICAL SPECIFICATIONS

Colour blue

Material cast iron

Material impeller 1 cast iron

Connection DIN flange

Max. temperature 90 °C

Minimum medium temperature -10 °C  
(continuous)

Maximum ambient temperature 40 °C

Minimum ambient temperature 0 °C

Type MN40 200 A

Output Power 10 HP

Max. head 56.2 m

Size DN65 x 65 mm x DN40 x 40 mm

Seal type H

Length 590 mm

Voltage 400/690VAC

Width 273 mm

Weight	81 kg
Power	7.5 kW
Height	340 mm
Max flow rate	42 m <sup>3</sup> /h
BEP Capacity	34
BEP Head	48
Efficiency	57 %
Press	40
Suction	65
Packaging dimensions L/W/H	627 x 287 x 408 mm

## DIMENSIONS

Cb-1	160 mm
Cl-1	100 mm
Ct-1	180 mm
G-1	212 mm
H	340 mm
H	340 mm
L	590 mm

Mc 70 mm

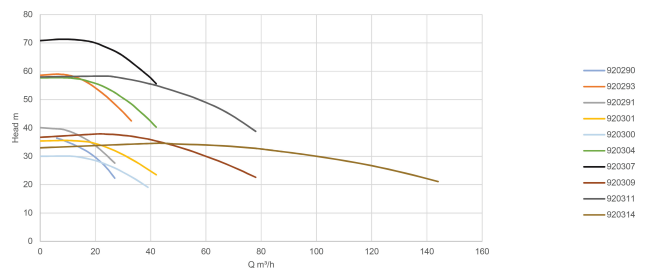
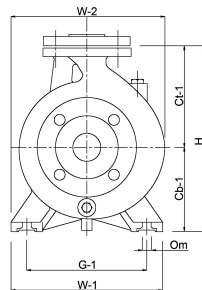
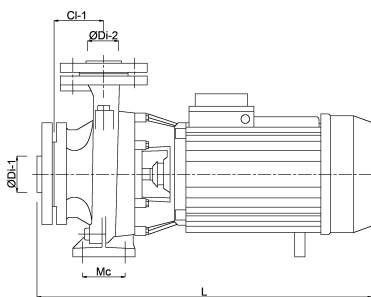
O 14 mm

W-1 265 mm

W-2 273 mm

ØDi-1 65 mm

ØDi-2 40 mm



## PRODUCT INFORMATION

The pumps are supplied complete with counter flanges with female thread.

Mechanical seal.

Maximum water temperature 90°C.

**Last modified date: 10/07/2026**

Bosta UK Ltd.  
Reflection House  
Olding Road  
Bury St. Edmunds

Suffolk  
IP33 3TA  
T +44 (0) 1284 716580  
E [enquiries@bosta.co.uk](mailto:enquiries@bosta.co.uk)  
<http://www.bosta.com>