

**Profec Stub flange PVC-U 90
mm glue socket 16bar DN80
grey PN16 WRAS (0110905)**



TECHNICAL SPECIFICATIONS

Colour	grey
Material	PVC-U
Approval	WRAS
Material housing	PVC-U
Material seal	EPDM
Connection	glue socket
Size	90 mm
Packaging	30 pcs
DN	80
Flange	PN16
Outer ø	108 mm
Weight	0.26 kg
Thickness	11 mm
Pressure	16 bar
PCD	108 mm

DIMENSIONS

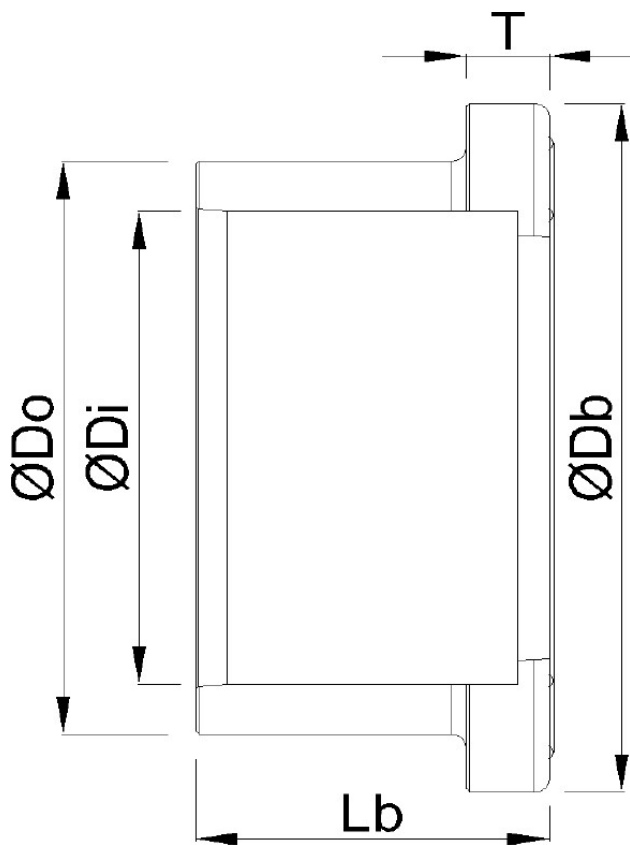
Db 125 mm

Lb 56 mm

T 11 mm

ØDi-1 90 mm

ØDo-1 108 mm



PRODUCT INFORMATION

Next to the connection dimensions (Size and PCD) for the backing rings and stub flanges we show the inner-hole size of the backing flange and the pipe size from the stub flange.

For backing rings, the inner hole size is given in column Inner Ø

For stub flanges, the pipe size is given in column Outer Ø

Last modified date: 23/05/2026

Bosta UK Ltd.
Reflection House
Olding Road
Bury St. Edmunds
Suffolk
IP33 3TA
T +44 (0) 1284 716580
E enquiries@bosta.co.uk
<http://www.bosta.com>