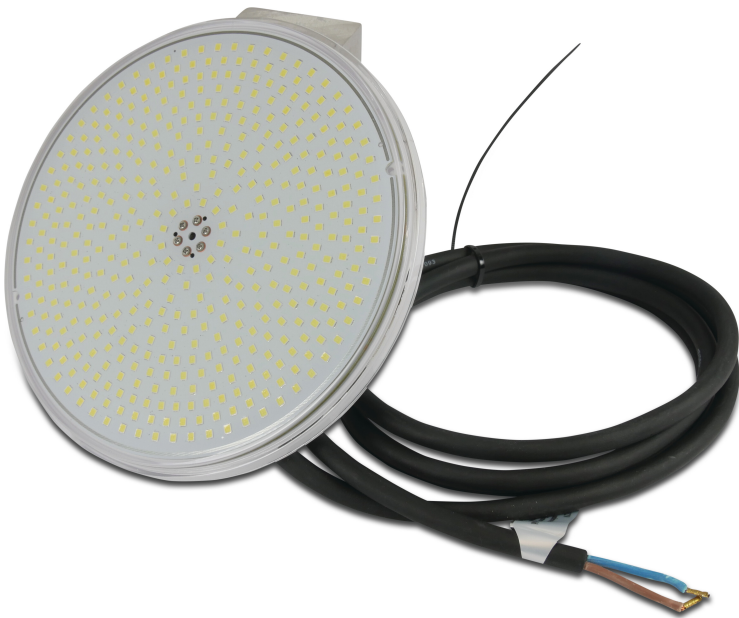


# Flotide Replacement LED light 12VAC Par 56 RGB 35W (7030301)



**FLOTIDE**

# TECHNICAL SPECIFICATIONS

Model	Par 56
-------	--------

Voltage	12VAC
---------	-------

Outer ø	177 mm
---------	--------

Colour LEDs	RGB
-------------	-----

Capacity	35 W
----------	------

Number of LED	441
---------------	-----

**Last modified date: 10/03/2026**

Bosta UK Ltd.  
Reflection House  
Olding Road  
Bury St. Edmunds  
Suffolk  
IP33 3TA  
T +44 (0) 1284 716580  
E [enquiries@bosta.co.uk](mailto:enquiries@bosta.co.uk)  
<http://www.bosta.com>