

**Profec Stub flange PVC-U 315
mm glue socket 10bar DN300
grey PN10 WRAS (0110912)**



TECHNICAL SPECIFICATIONS

Colour	grey
Material	PVC-U
Approval	WRAS
Material housing	PVC-U
Material seal	EPDM
Connection	glue socket
Size	315 mm
Packaging	3 pcs
DN	300
Flange	PN10
Outer ø	342 mm
Weight	4.05 kg
Thickness	28 mm
Pressure	10 bar
PCD	342 mm

DIMENSIONS

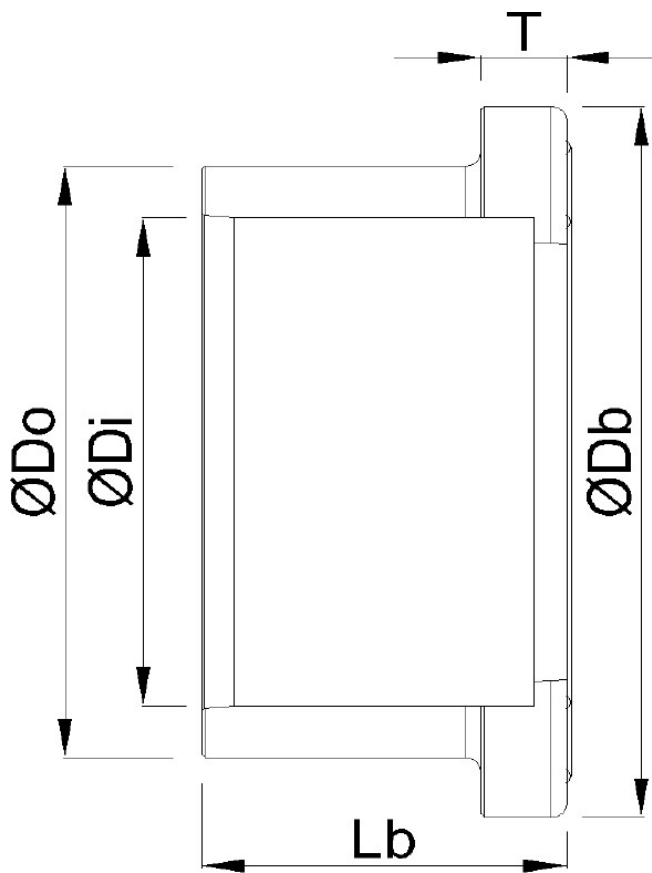
Db 378 mm

Lb 174 mm

T 28 mm

ØDi-1 315 mm

ØDo-1 342 mm



PRODUCT INFORMATION

Next to the connection dimensions (Size and PCD) for the backing rings and stub flanges we show the inner-hole size of the backing flange and the pipe size from the stub flange. For backing rings, the inner hole size is given in column Inner Ø

For stub flanges, the pipe size is given in column Outer Ø

Last modified date: 17/04/2026

Bosta UK Ltd.
Reflection House
Olding Road
Bury St. Edmunds
Suffolk
IP33 3TA
T +44 (0) 1284 716580
E enquiries@bosta.co.uk
<http://www.bosta.com>