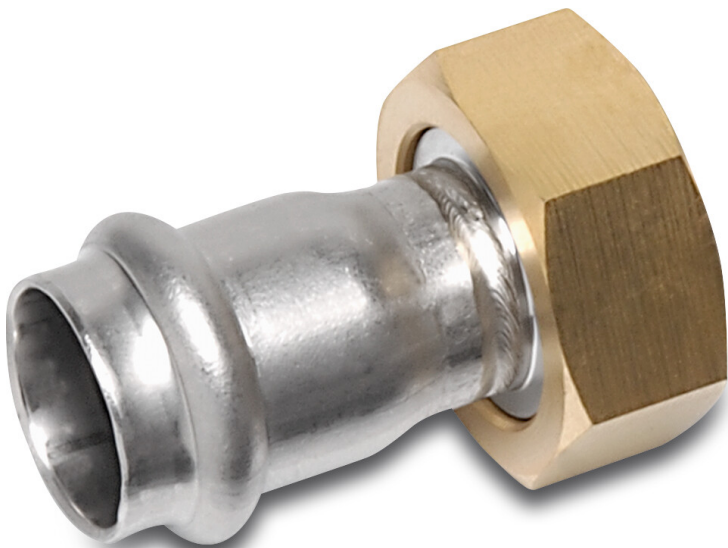


**Bonfix 2/3 union coupler
stainless steel 316L 1 1/2" x 35
mm female thread x press
16bar DVGW/KIWA (0085070)**



bonfix[®]
the fitting factory

TECHNICAL SPECIFICATIONS

Material stainless steel 316L

Approval DVGW/KIWA

Material seal EPDM

Connection female thread x press

Temperature range -20°C - 85°C

Pressure 16 bar

Wall thickness 1,5 mm

Size 1 1/2" x 35 mm

Last modified date: 22/05/2026

Bosta UK Ltd.
Reflection House
Olding Road
Bury St. Edmunds
Suffolk
IP33 3TA
T +44 (0) 1284 716580
E enquiries@bosta.co.uk
<http://www.bosta.com>