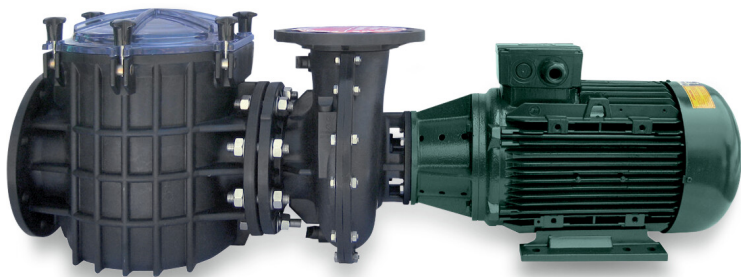


**PSH Commercial pool pump
PP/GF30 DN100 flange 7,4A
400/690VAC black/green type
F-Giant-18 (7029864)**



 P S H

TECHNICAL SPECIFICATIONS

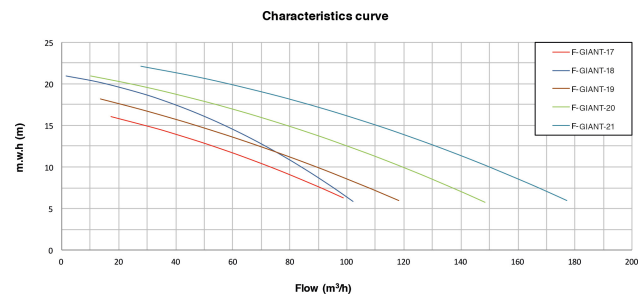
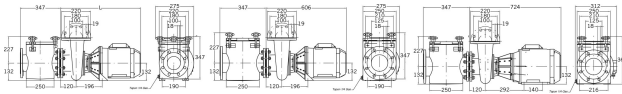
Colour	black/green
Shaft	stainless steel 316L
Pump body	PP/GF30
Material impeller 1	plastic
Material cover	polycarbonate
Material seal	carbon/ceramic
Connection	flange
Frequency	50 Hz
IP value	IP55
Motor RPM	2900
Type	F-Giant-18
Capacity	102 m ³ /h
Output Power	5,5 HP
Max. head	20 m
Size	DN100
Voltage	400/690VAC
Weight	68 kg

Power

4 kW

Ampere

7,4 A



PRODUCT INFORMATION

F-GIANT is the first high flow rate pump entirely built in plastic, offering the best hydraulic performance in the market. Equipped with a one-piece helical plastic impeller developed with innovative technology and patented by BOMBAS PSH. Equipped with volute shaped plastic pump housing which is also BOMBAS PSH patented. F-GIANT is eco-friendly and sustainable, especially recommended for large aquariums due to its low noise level and the absence of contact of metal parts with water. For the same reason the F-GIANT is fully compatible with sea water, salt chlorinators and salt ionisers, therefore contributing to responsible water management, and reducing chemical consumption in the treatment of pool water.

Features:

- High hydraulic efficiency
- Extremely quiet
- Important savings of electrical energy
- High efficiency motor class IE3 according to regulation (EU)2019/1781
- Standard motor which makes it compatible with any manufacturer's engine worldwide
- Suitable for all types of water
- Especially suitable for use in large aquariums to preserve the health of the marine fauna
- High strength of material thanks to its 9mm wall thickness
- A large volume pre-filter and a transparent lid with easy access for cleaning
- Independent pre-filter allows use of the pump without pre-filter
- Insulation Class: F

- Protection: IP55 rating
- High quality mechanical seal

Last modified date: 26/05/2026

Bosta UK Ltd.
Reflection House
Olding Road
Bury St. Edmunds
Suffolk
IP33 3TA
T +44 (0) 1284 716580
E enquiries@bosta.co.uk
<http://www.bosta.com>