

**Profec Stub flange PVC-U 75
mm glue socket 16bar DN65
grey PN16 WRAS (0110904)**



TECHNICAL SPECIFICATIONS

| | |
|------------------|-------------|
| Colour | grey |
| Material | PVC-U |
| Approval | WRAS |
| Material housing | PVC-U |
| Material seal | EPDM |
| Connection | glue socket |
| Size | 75 mm |
| Packaging | 55 pcs |
| DN | 65 |
| Flange | PN16 |
| Outer ø | 91 mm |
| Weight | 0.163 kg |
| Thickness | 10 mm |
| Pressure | 16 bar |
| PCD | 90 mm |

DIMENSIONS

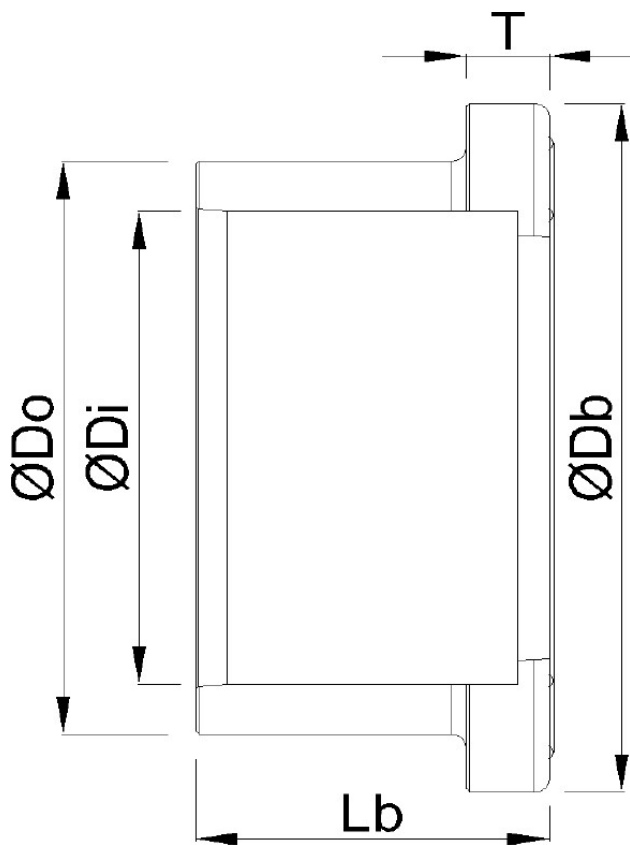
Db 106 mm

Lb 47 mm

T 10 mm

ØDi-1 75 mm

ØDo-1 91 mm



PRODUCT INFORMATION

Next to the connection dimensions (Size and PCD) for the backing rings and stub flanges we show the inner-hole size of the backing flange and the pipe size from the stub flange.

For backing rings, the inner hole size is given in column Inner Ø

For stub flanges, the pipe size is given in column Outer Ø

Last modified date: 23/05/2026

Bosta UK Ltd.
Reflection House
Olding Road
Bury St. Edmunds
Suffolk
IP33 3TA
T +44 (0) 1284 716580
E enquiries@bosta.co.uk
<http://www.bosta.com>