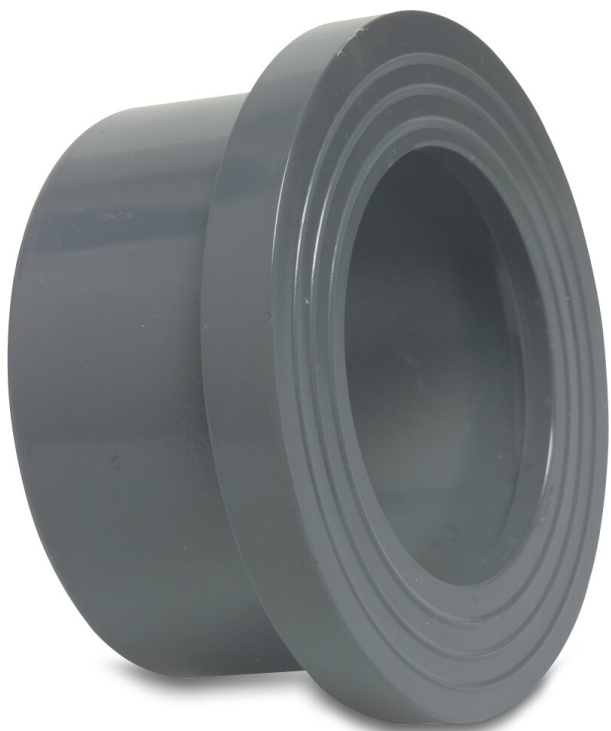


**Profec Stub flange PVC-U 400  
mm glue socket 6bar DN375  
grey PN6 WRAS (0110915)**



# TECHNICAL SPECIFICATIONS

Colour	grey
Material	PVC-U
Approval	WRAS
Material housing	PVC-U
Material seal	EPDM
Connection	glue socket
Size	400 mm
Packaging	1 pcs
DN	375
Flange	PN6
Outer ø	432 mm
Weight	7.63 kg
Thickness	30 mm
Pressure	6 bar
PCD	432 mm

## DIMENSIONS

Db 482 mm

Lb 202 mm

T 30 mm

ØDi-1 400 mm

ØDo-1 432 mm



## PRODUCT INFORMATION

Next to the connection dimensions (Size and PCD) for the backing rings and stub flanges we show the inner-hole size of the backing flange and the pipe size from the stub flange.

For backing rings, the inner hole size is given in column Inner Ø

For stub flanges, the pipe size is given in column Outer Ø

**Last modified date: 23/05/2026**

Bosta UK Ltd.  
Reflection House  
Olding Road  
Bury St. Edmunds  
Suffolk  
IP33 3TA  
T +44 (0) 1284 716580  
E [enquiries@bosta.co.uk](mailto:enquiries@bosta.co.uk)  
<http://www.bosta.com>