

**Grundfos Variable speed  
circulation pump cast iron  
DN32 flange 10bar 0.061A  
230VAC black/red WRAS type  
MAGNA3 32-40F (220)  
(7039796)**



GRUNDFOS 

# TECHNICAL SPECIFICATIONS

Colour black/red

Material cast iron

Approval WRAS

Pump body cast iron

Material impeller 1 fibreglass-reinforced PES

Connection flange

Voltage 230VAC

Max. temperature 110 °C

Minimum medium temperature -10 °C  
(continuous)

Impellers 1

Frequency 50 Hz

Maximum ambient temperature 40 °C

Pressure 10 bar

Minimum ambient temperature 0 °C

Type MAGNA3 32-40F (220)

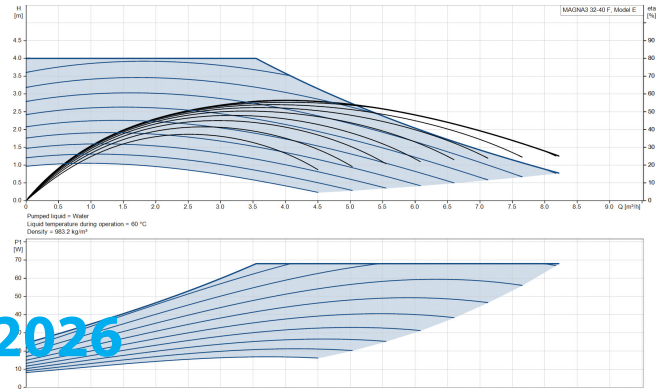
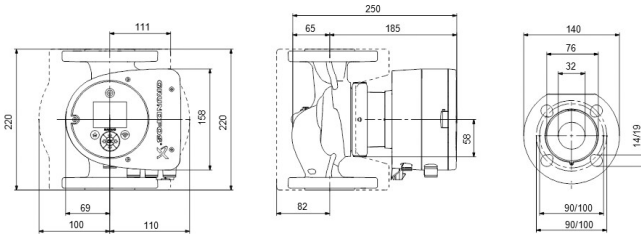
Max. head 4 m

Size

DN32

Ampere

0.061 A



**Last modified date: 10/05/2026**

Bosta UK Ltd.  
Reflection House  
Olding Road  
Bury St. Edmunds  
Suffolk  
IP33 3TA  
T +44 (0) 1284 716580  
E [enquiries@bosta.co.uk](mailto:enquiries@bosta.co.uk)  
<http://www.bosta.com>