

Rovatti Centrifugal pump cast iron DN50 DIN flange black type T0F-50A (7024365)



rovatti pompe

TECHNICAL SPECIFICATIONS

Colour	black
Material	cast iron
Material impeller 1	cast iron
Connection	DIN flange
Max. temperature	60 °C
Press	50
Suction	50
Type	TOF-50A
Output Power	5-7,5 HP
Max. head	40 m
Size	DN50
Max flow rate	27 m ³ /h

DIMENSIONS

Cr-1	89 mm
Ct-1	66 mm
Dd	41.28 mm

H 326 mm

H 343 mm

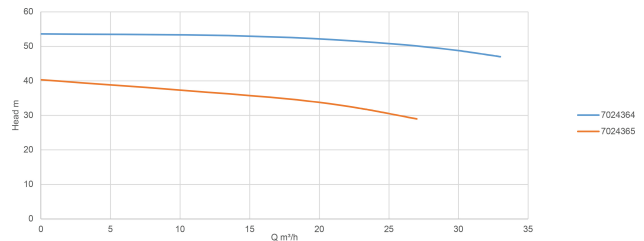
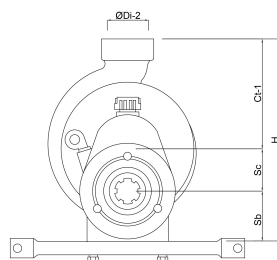
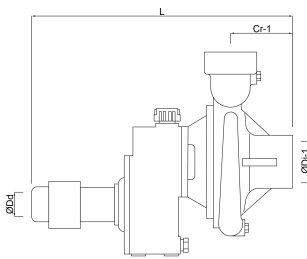
L 408 mm

Sb 73 mm

Sc 187 mm

ØDi-1 2 "

ØDi-2 2 "



PRODUCT INFORMATION

The tractor driven pumps type T0 come installed with the "E" impeller which provides the highest pressure. For different impellers please consult with us.

The T0 pumps come with the Standard Gear Ratio (PTO) of 540 RPM. Connect the pumps directly to the PTO (tractor).

The T0 pumps come with a lattyflon stuffing-box packing which is ideal for dirty water installation. The stuffing-box packing needs to be adjusted accordingly with the Twinner System (2 parts) so it is always leaking in order to keep it lubricated and cool.

The T0 pumps are delivered with a suction pipe, elbow and a filtration basket

The T0F-50 type is non priming pump and the T0F-50A type is self-priming pump.

Application

Medium Pressure Sprinkler for Fertigation Systems: types T0F-50 and T0F-50A.

Last modified date: 26/05/2026

Bosta UK Ltd.
Reflection House
Olding Road
Bury St. Edmunds
Suffolk
IP33 3TA
T +44 (0) 1284 716580
E enquiries@bosta.co.uk
<http://www.bosta.com>