

**Profec Hose tail 2/3 union  
adaptor brass 1 1/4" x 25 mm  
female threaded nut x hose tail  
type flat seal (0423343)**

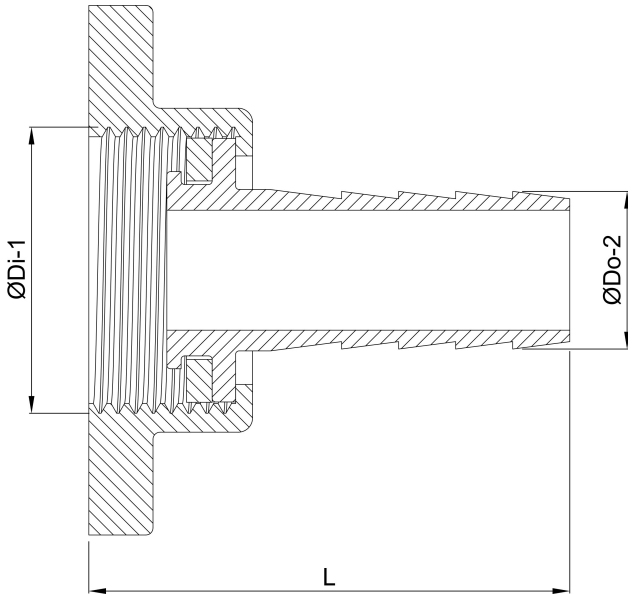


# TECHNICAL SPECIFICATIONS

Type	flat seal
Material	brass
Connection	female threaded nut x hose tail
Max. temp.	120 °C
Size	1 1/4" x 25 mm
Max. temperature	120 °C

## DIMENSIONS

Dq-2	24 mm
F-1	13 mm
L	40.8 mm
Lb	48 mm
Lq-2	27 mm
Nq-2	4
P-1	27 mm
ØDi-1	1 1/4 "
ØDo-2	25 mm



**Last modified date: 23/05/2026**

Bosta UK Ltd.  
Reflection House  
Olding Road  
Bury St. Edmunds  
Suffolk  
IP33 3TA  
T +44 (0) 1284 716580  
E [enquiries@bosta.co.uk](mailto:enquiries@bosta.co.uk)  
<http://www.bosta.com>